

Honey Bizz Price List

Effective June 9, 2023

Designed By Mark Müller and Christopher Wright

Statement of Line



Page 8
90° In-Plan
2 Arm Lounge w/ Legs



Page 9
90° In-Plan
2 Arm Sofa



Page 10
90° In-Plan
Left Side Facing



Page 11
90° In-Plan
Armless Chair



Page 12
90° In-Plan
Right Side Facing



Page 13
90° In-Plan
Armless Sofa



Page 14
90° In-Plan
Corner Chair



Page 15
120° In-Plan
2 Arm Lounge



Page 16
120° In-Plan
Wedge



Page 17
120° In-Plan
Left Side Facing Chair



Page 18
120° In-Plan
Armless Settee



Page 19
120° In-Plan
Right Side Facing



Page 20
120° In-Plan
Stand Alone Bench



Page 21
120° In-Plan
Left Side End Bench



Page 22
120° In-Plan
Right Side End Bench



Page 23
120° In-Plan
Wedge



Page 24
90° In-Plan
Stand Alone Small Bench



Page 25
90° In-Plan
Stand Alone Large Bench



Page 26
90° In-Plan
Left Side End Bench



Page 27
90° In-Plan
Right Side End Bench



Page 28
90° In-Plan
Corner Bench Connector



Page 29
Bench
Medium Modular



Page 30
Bench
Small Modular Bench



Page 31
Bench
Large Modular Bench

Seating & fabric leather program

DARRAN has partnered with some of the most prestigious fabric suppliers of the office furniture industry to bring you quality fabrics that are engaging designs, environmentally friendly and durable for years to come. The majority of fabrics we have graded-in are in heavy supply making it most likely available on our Quickship however, we cannot guarantee stock. If you do not see the fabric you wish to include in a project, please contact Customer Service to see if this pattern can be graded in at 800.334.7891.

Panel fabric program

ALL COM fabric must be preapproved by DARRAN. Leather fabric program is not approved on panels. Due to stretching and sagging textile content for panels shouldnt exceed a combined 50% cotton, linen, nylon and/or rayon is not recommended. Panel fabrics are required to have flame certificates that meet ASTM E84 Adhered (for power panels) and Unadhered (for panels). DARRAN does not accept responsibility of collecting flame certificates for COM.

Fabrics & leathers

Please visit our Seating Fabrics page at darran.com/textilesleather

Camira
www.camirafabrics.com
800.334.789

Wollsdorf
www.wollsdorf.com
336.884.5005

CFStinson
www.cfstinson.com
800.841.6279

Green Hides
www.greenhides.com
336.315.9720

DesignTex
www.designtex.com
800.797.4949

Maharam
www.maharam.com
800.645.3943

Momentum Textiles
www.momentumtextiles.com
800.366.6839

Ultrafabrics
www.ultrafabricsinc.com
800.334.7891

Application instructions must be specified on the purchase order or COM / COL submission form. In the absence of application instructions, DARRAN will apply materials accordingly.

CAL117

All DARRAN seating products conform to California Technical Bulletin 117 as a minimum standard.

CAL133

To meet the California Technical Bulletin 133 flammability regulation, a combination of proper materials must be used to pass, as it tests the fire resistance of a finished product. Flame resistant fabric, a fire blocker material and special foam must be used to pass CAL133 fire codes.

Testing is available for all seating products with the following fees and considerations:

- If laboratory certification is not required, any style can be manufactured to comply with California Technical Bulletin 133 for \$75 list per yard required. (Customer's Own Materials must factor in additional yardage requirements based on repeat.)
- The purchase order must clearly indicate the requirement of California Technical Bulletin 133
- If laboratory California Technical Bulletin 133 certification is required, the cost of testing a chair is \$820 NET, plus the cost of the chair and covering material.
- An additional lead time of 4 to 6 weeks is required for testing for CAL133.
- Once testing is completed, we will provide a certification letter specific to the sample tested for CAL133.
- DARRAN's manufacturing procedures for California TB 133 compliance are based on the testing of representative style with specific fabrics. Please contact Customer Service for an updated list of tested models.
- A copy of test certification is available upon request.

Combination fabrics

DARRAN is pleased to offer customers the design freedom of combination fabrics. When using fabric, vinyl or leather combinations, pricing will be as follows:

- When combining two materials of the same grade, pricing will be specified grade + 5%.
- If combining two materials of different grades or leather/ fabric combination, use the highest grade/price + 5%.
- If using COM or COL, pricing will be COM or COL + 5%. If both COM + COL are used in combination, use COL + 5%

COM/COL ordering instructions

Please complete the COM Approval Form prior to ordering the fabric from the supplier. All COM fabrics must be approved prior to order submission. Please refer to our website or contact DARRAN Seating Customer Service for an updated list of preapproved COM fabrics. Application instructions must be specified on the purchase order or COM/COL submission form. In the absence of application instructions, DARRAN will apply materials in the best manner and cannot be held responsible for tailoring or application objections after upholstering. COM orders will be scheduled for production after receipt of the material. Packages must be clearly marked and the fabric must be first quality, continuous yardage.

COM/COL yardage requirements

The yardage requirements stated in this price list for each style are calculated using 54" wide, non-directional fabrics. For fabrics with a different width or for patterns with repeats, please refer to the below chart to calculate the additional percent of fabric required:

Fabric Width	Plain Fabric	2" - 14" Repeat	15" - 19" Repeat	20" - 27" Repeat	28" - 36" Repeat
54"	0	15%	20%	25%	30%
53"	6%	19%	24%	28%	36%
52"	13%	23%	28%	33%	38%
51"	19%	26%	31%	36%	41%
50"	25%	30%	35%	40%	45%
49"	30%	35%	40%	45%	50%
48"	35%	40%	45%	50%	55%
47"	45%	50%	55%	58%	65%

DARRAN®

NOTE: Prior To Completion Of This Form, Please Refer To Our Graded In Materials Program For Preapproved Fabrics/Leathers.

COM/COL Approval

DARRAN Furniture Industries
2402 Shore Street, High Point, NC 27263
ATTN: Seating Division / COM/COL Approval
TAG: DARRAN Quote Number

Shipping approved COM/COL materials

DARRAN Furniture Industries
2402 Shore Street, High Point, NC 27263
ATTN: Seating Division / COM/COL Approval
TAG: DARRAN Quote Number

Please complete this form, attach a 6"x 6" sample and mail to the COM/COL APPROVAL address shown above.
This form can also be downloaded from our website at www.darran.com/leathers OR www.darran.com/fabrics

Quote # _____

Dealer's Name _____

Contact _____

Address _____

Telephone _____

Email _____

Chair Style _____

Manufacturer _____

Pattern Name _____

Pattern Color _____

Content _____

Repeat _____

Please specify any special requirements and check the application above.

Honey Bizz Fabric & Leather Program

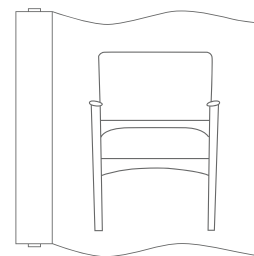
ATTACH 6" X 6" FABRIC/LEATHER SAMPLE HERE

NOTE
Actual Fabric/Leather samples needed instead of digital images. If digital images are sent in lieu of samples, DARRAN will only verify the pattern and will not take responsibility for color variances that cannot be verified due to printing limitations.

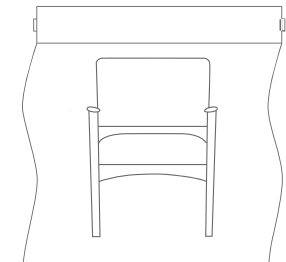
In the absence of application instructions, DARRAN will apply the material in the best manner and cannot be held responsible for tailoring or application objections after upholstering.

Unless otherwise instructed on the purchase order, excess COM materials will be recycled at the discretion of DARRAN after six months of the original product ship date.

The COM approval solely pertains to the application of the fabric onto the specified DARRAN seating product. DARRAN's approval or acceptance does not constitute any responsibility or warranty to the overall appearance, durability, flammability, defects, dye lot variations or colorfastness of the COM. It is the customer's responsibility to ensure the COM meets CAL 117 compliance and are first quality continuous goods.



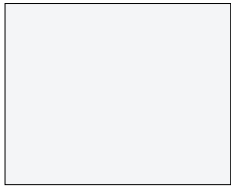
RAILROAD



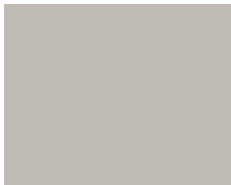
SETUP

Metal stretcher is standard in MFW White. Optional Premium Metal Finishes are available.

STANDARD



MFW White
(Standard)



MFG Gray
(Premium)



MFGG Graphite Gray
(Premium)



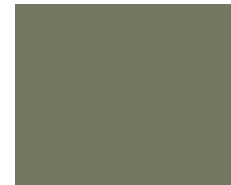
MFS Silver
(Premium)



MFMB Matte Black
(Premium)



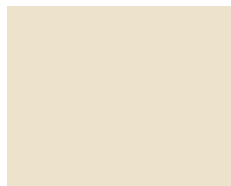
MFNA Navy
(Premium)



MFOL Olive
(Premium)



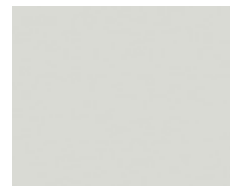
MFGB Grey Beige
(Premium)



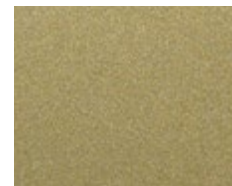
MFOS Oyster
(Premium)



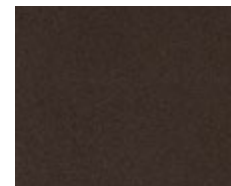
MFSB Satin Bronze
(Premium)



MGW Gray White
(Premium)



MFGM Gold
(Premium)



MFDB Dark Bronze
(Premium)

Honey Bizz

90° In-Plan
2 Arm Lounge w/ Legs

[Click here to view statement of line](#)



1 Model HNY0170DAL60

w" x d" x h"
47.5 x 31.5 x 32

COM	COL	1	2	3	4	5	6	7	8	9	10	11/L1	12	13/L2
3489	3608	3727	3846	3965	4084	4203	4322	4441	4560	4679	4798	4917	5036	5274

Upholstery Requirements
Fabric yds: 6.5 Leather Sq. Ft.:117
Carton Weight:

Product Features

- Frame constructed of CNC cut engineered hardwood plywood to maximize strength and overall longevity
- Joints are securely fastened with mortise and tenon joinery as well as corner block construction
- Engineered strand webbing is interwoven in the seat of the frame for enhanced endurance, sustainability and comfort
- Soy-based, high resilient polyurethane foam with a minimum of 2.0 density foam in the seat and back
- Steel legs are powder coated for long lasting durability
- Legs have a 1 inch leveling glide for use on any floor surface

2 Leg Finish

[Click to view finishes](#)

Metal Finish
MFW White. Additional Metal Finishes are available, see options

3 Combination Fabrics

DARRAN is pleased to offer customers the design freedom of combination fabrics. When using fabric, vinyl or leather combinations, pricing/yardage requirements will be as follows:

A Lounge Seat 3.5 yd. (s)
B Lounge Back 3.5 yd. (s)



- When combining two materials of the same grade, pricing will be specified grade + 5%
- If combining two materials of different grades or leather/fabric combination, use the highest grade/price + 5%
- If using COM or COL, pricing will be COM or COL + 5%.
- If both COM + COL are used in combination, use COL + 5%.

Options

Premium Metal Finishes

- Specify Metal Finish Color. MFMB: Matte Black, MFS: Silver, MFOS: Oyster, MFNA: Navy, MFOL: Olive, MFGG: Graphite Gray, MFG: Gray, MFDB: Dark Bronze, MFGM Gold, MFGW: Satin Bronze, MFGW: Gray White - \$175

Honey Bizz

90° In-Plan
2 Arm Sofa

[Click here to view statement of line](#)



1 Model HNY0170DAS64

w" x d" x h"
65.5 x 31.5 x 32

COM	COL	1	2	3	4	5	6	7	8	9	10	11/L1	12	13/L2
3709	3864	4019	4174	4329	4484	4639	4794	4949	5104	5259	5414	5569	5724	6034

Upholstery Requirements
Fabric yds: 8.5 Leather Sq. Ft.:153
Carton Weight:

Product Features

- Frame constructed of CNC cut engineered hardwood plywood to maximize strength and overall longevity
- Joints are securely fastened with mortise and tenon joinery as well as corner block construction
- Engineered strand webbing is interwoven in the seat of the frame for enhanced endurance, sustainability and comfort
- Soy-based, high resilient polyurethane foam with a minimum of 2.0 density foam in the seat and back
- Steel legs are powder coated for long lasting durability
- Legs have a 1 inch leveling glide for use on any floor surface

2 Leg Finish

[Click to view finishes](#)

Metal Finish
MFW White. Additional Metal Finishes are available, see options

3 Combination Fabrics

DARRAN is pleased to offer customers the design freedom of combination fabrics. When using fabric, vinyl or leather combinations, pricing/yardage requirements will be as follows:

A Lounge Seat 5 yd. (s)
B Lounge Back 4.5 yd. (s)



- When combining two materials of the same grade, pricing will be specified grade + 5%
- If combining two materials of different grades or leather/fabric combination, use the highest grade/price + 5%
- If using COM or COL, pricing will be COM or COL + 5%.
- If both COM + COL are used in combination, use COL + 5%.

Options

Premium Metal Finishes

- Specify Metal Finish Color. MFMB: Matte Black, MFS: Silver, MFOS: Oyster, MFNA: Navy, MFOL: Olive, MFGG: Graphite Gray, MFG: Gray, MFDB: Dark Bronze, MFGM Gold, MFGW: Satin Bronze, MFGW: Gray White - \$175

Honey Bizz

90° In-Plan

Left Side Facing

[Click here to view statement of line](#)



1 Model HNY0170LAC62

w" x d" x h"
32 x 31.5 x 32

COM	COL	1	2	3	4	5	6	7	8	9	10	11/L1	12	13/L2
3094	3176	3258	3340	3422	3504	3586	3668	3750	3832	3914	3996	4078	4160	4324

Upholstery Requirements
Fabric yds: 4.5 Leather Sq. Ft.:81
Carton Weight:

Product Features

- Frame constructed of CNC cut engineered hardwood plywood to maximize strength and overall longevity
- Joints are securely fastened with mortise and tenon joinery as well as corner block construction
- Engineered strand webbing is interwoven in the seat of the frame for enhanced endurance, sustainability and comfort
- Soy-based, high resilient polyurethane foam with a minimum of 2.0 density foam in the seat and back
- Steel legs are powder coated for long lasting durability
- Legs have a 1 inch leveling glide for use on any floor surface

2 Leg Finish

[Click to view finishes](#)

Metal Finish
MFW White. Additional Metal Finishes are available, see options

3 Combination Fabrics

DARRAN is pleased to offer customers the design freedom of combination fabrics. When using fabric, vinyl or leather combinations, pricing/yardage requirements will be as follows:

A Lounge Seat 3 yd. (s)
B Lounge Back 2.5 yd.



- When combining two materials of the same grade, pricing will be specified grade + 5%
- If combining two materials of different grades or leather/fabric combination, use the highest grade/price + 5%
- If using COM or COL, pricing will be COM or COL + 5%.
- If both COM + COL are used in combination, use COL + 5%.

Options

Premium Metal Finishes

- Specify Metal Finish Color. MFMB: Matte Black, MFS: Silver, MFOS: Oyster, MFNA: Navy, MFOL: Olive, MFGG: Graphite Gray, MFG: Gray, MFDB: Dark Bronze, MFGM Gold, MFGW: Satin Bronze, MFGW: Gray White - \$175

Honey Bizz

90° In-Plan
Armless Chair

[Click here to view statement of line](#)



1 Model HNY0170NAC63

w" x d" x h"
25 x 31.5 x 32

COM	COL	1	2	3	4	5	6	7	8	9	10	11/L1	12	13/L2
2758	2831	2904	2977	3050	3123	3196	3269	3342	3415	3488	3561	3634	3707	3853

Upholstery Requirements
Fabric yds: 4 Leather Sq. Ft.:72
Carton Weight:

Product Features

- Frame constructed of CNC cut engineered hardwood plywood to maximize strength and overall longevity
- Joints are securely fastened with mortise and tenon joinery as well as corner block construction
- Engineered strand webbing is interwoven in the seat of the frame for enhanced endurance, sustainability and comfort
- Soy-based, high resilient polyurethane foam with a minimum of 2.0 density foam in the seat and back
- Steel legs are powder coated for long lasting durability
- Legs have a 1 inch leveling glide for use on any floor surface

2 Leg Finish

[Click to view finishes](#)

Metal Finish
MFW White. Additional Metal Finishes are available, see options

3 Combination Fabrics

DARRAN is pleased to offer customers the design freedom of combination fabrics. When using fabric, vinyl or leather combinations, pricing/yardage requirements will be as follows:

A Lounge Seat 2 yd. (s)
B Lounge Back 2 yd.



- When combining two materials of the same grade, pricing will be specified grade + 5%
- If combining two materials of different grades or leather/fabric combination, use the highest grade/price + 5%
- If using COM or COL, pricing will be COM or COL + 5%.
- If both COM + COL are used in combination, use COL + 5%.

Options

Premium Metal Finishes

- Specify Metal Finish Color. MFMB: Matte Black, MFS: Silver, MFOS: Oyster, MFNA: Navy, MFOL: Olive, MFGG: Graphite Gray, MFG: Gray, MFDB: Dark Bronze, MFGM Gold, MFGW: Satin Bronze, MFGW: Gray White - \$175

Honey Bizz

90° In-Plan
Right Side Facing

[Click here to view statement of line](#)



1 Model HNY0170RAC62

w" x d" x h"
32 x 31.5 x 32

COM	COL	1	2	3	4	5	6	7	8	9	10	11/L1	12	13/L2
3094	3176	3258	3340	3422	3504	3586	3668	3750	3832	3914	3996	4078	4160	4324

Upholstery Requirements
Fabric yds: 4.5 Leather Sq. Ft.:81
Carton Weight:

Product Features

- Frame constructed of CNC cut engineered hardwood plywood to maximize strength and overall longevity
- Joints are securely fastened with mortise and tenon joinery as well as corner block construction
- Engineered strand webbing is interwoven in the seat of the frame for enhanced endurance, sustainability and comfort
- Soy-based, high resilient polyurethane foam with a minimum of 2.0 density foam in the seat and back
- Steel legs are powder coated for long lasting durability
- Legs have a 1 inch leveling glide for use on any floor surface

2 Leg Finish

[Click to view finishes](#)

Metal Finish
MFW White. Additional Metal Finishes are available, see options

3 Combination Fabrics

DARRAN is pleased to offer customers the design freedom of combination fabrics. When using fabric, vinyl or leather combinations, pricing/yardage requirements will be as follows:

A Lounge Seat 3 yd. (s)
B Lounge Back 2.5 yd.



- When combining two materials of the same grade, pricing will be specified grade + 5%
- If combining two materials of different grades or leather/fabric combination, use the highest grade/price + 5%
- If using COM or COL, pricing will be COM or COL + 5%.
- If both COM + COL are used in combination, use COL + 5%.

Options

Premium Metal Finishes

- Specify Metal Finish Color. MFMB: Matte Black, MFS: Silver, MFOS: Oyster, MFNA: Navy, MFOL: Olive, MFGG: Graphite Gray, MFG: Gray, MFDB: Dark Bronze, MFGM Gold, MFGW: Satin Bronze, MFGW: Gray White - \$175

Honey Bizz

90° In-Plan
Armless Sofa

[Click here to view statement of line](#)



1 Model HNY0170NAS65

w" x d" x h"
64 x 31.5 x 32

COM	COL	1	2	3	4	5	6	7	8	9	10	11/L1	12	13/L2
3285	3422	3559	3696	3833	3970	4107	4244	4381	4518	4655	4792	4929	5066	5340

Upholstery Requirements
Fabric yds: 7.5 Leather Sq. Ft.:135
Carton Weight:

Product Features

- Frame constructed of CNC cut engineered hardwood plywood to maximize strength and overall longevity
- Joints are securely fastened with mortise and tenon joinery as well as corner block construction
- Engineered strand webbing is interwoven in the seat of the frame for enhanced endurance, sustainability and comfort
- Soy-based, high resilient polyurethane foam with a minimum of 2.0 density foam in the seat and back
- Steel legs are powder coated for long lasting durability
- Legs have a 1 inch leveling glide for use on any floor surface

2 Leg Finish

[Click to view finishes](#)

Metal Finish
MFW White. Additional Metal Finishes are available, see options

3 Combination Fabrics

DARRAN is pleased to offer customers the design freedom of combination fabrics. When using fabric, vinyl or leather combinations, pricing/yardage requirements will be as follows:

A Lounge Seat 4 yd. (s)
B Lounge Back 4 yd.



- When combining two materials of the same grade, pricing will be specified grade + 5%
- If combining two materials of different grades or leather/fabric combination, use the highest grade/price + 5%
- If using COM or COL, pricing will be COM or COL + 5%.
- If both COM + COL are used in combination, use COL + 5%.

Options

Premium Metal Finishes

- Specify Metal Finish Color. MFMB: Matte Black, MFS: Silver, MFOS: Oyster, MFNA: Navy, MFOL: Olive, MFGG: Graphite Gray, MFG: Gray, MFDB: Dark Bronze, MFGM Gold, MFGW: Satin Bronze, MFGW: Gray White - \$175

Honey Bizz

90° In-Plan
Corner Chair

[Click here to view statement of line](#)



1 Model HNY0170NCC66

w" x d" x h"
31.5 x 31.5 x 32

COM	COL	1	2	3	4	5	6	7	8	9	10	11/L1	12	13/L2
3113	3204	3295	3386	3477	3568	3659	3750	3841	3932	4023	4114	4205	4296	4478

Upholstery Requirements
Fabric yds: 5 Leather Sq. Ft.:90
Carton Weight:

Product Features

- Frame constructed of CNC cut engineered hardwood plywood to maximize strength and overall longevity
- Joints are securely fastened with mortise and tenon joinery as well as corner block construction
- Engineered strand webbing is interwoven in the seat of the frame for enhanced endurance, sustainability and comfort
- Soy-based, high resilient polyurethane foam with a minimum of 2.0 density foam in the seat and back
- Steel legs are powder coated for long lasting durability
- Legs have a 1 inch leveling glide for use on any floor surface

2 Leg Finish

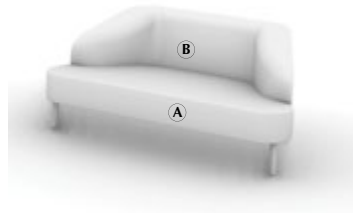
[Click to view finishes](#)

Metal Finish
MFW White. Additional Metal Finishes are available, see options

3 Combination Fabrics

DARRAN is pleased to offer customers the design freedom of combination fabrics. When using fabric, vinyl or leather combinations, pricing/yardage requirements will be as follows:

A Lounge Seat 3 yd. (s)
B Lounge Back 3 yd.



- When combining two materials of the same grade, pricing will be specified grade + 5%
- If combining two materials of different grades or leather/fabric combination, use the highest grade/price + 5%
- If using COM or COL, pricing will be COM or COL + 5%.
- If both COM + COL are used in combination, use COL + 5%.

Options

Premium Metal Finishes

- Specify Metal Finish Color. MFMB: Matte Black, MFS: Silver, MFOS: Oyster, MFNA: Navy, MFOL: Olive, MFGG: Graphite Gray, MFG: Gray, MFDB: Dark Bronze, MFGM Gold, MFGW: Satin Bronze, MFGW: Gray White - \$175

Honey Bizz

120° In-Plan
2 Arm Lounge

[Click here to view statement of line](#)



1 Model HNY0170DAL30

w" x d" x h"
67.5 x 31.5 x 32

COM	COL	1	2	3	4	5	6	7	8	9	10	11/L1	12	13/L2
3723	3851	3979	4107	4235	4363	4491	4619	4747	4875	5003	5131	5259	5387	5643

Upholstery Requirements
Fabric yds: 7 Leather Sq. Ft.:126
Carton Weight:

Product Features

- Frame constructed of CNC cut engineered hardwood plywood to maximize strength and overall longevity
- Joints are securely fastened with mortise and tenon joinery as well as corner block construction
- Engineered strand webbing is interwoven in the seat of the frame for enhanced endurance, sustainability and comfort
- Soy-based, high resilient polyurethane foam with a minimum of 2.0 density foam in the seat and back
- Steel legs are powder coated for long lasting durability
- Legs have a 1 inch leveling glide for use on any floor surface

2 Leg Finish

[Click to view finishes](#)

Metal Finish
MFW White. Additional Metal Finishes are available, see options

3 Combination Fabrics

DARRAN is pleased to offer customers the design freedom of combination fabrics. When using fabric, vinyl or leather combinations, pricing/yardage requirements will be as follows:

A Lounge Seat 4 yd. (s)
B Lounge Back 4 yd.



- When combining two materials of the same grade, pricing will be specified grade + 5%
- If combining two materials of different grades or leather/fabric combination, use the highest grade/price + 5%
- If using COM or COL, pricing will be COM or COL + 5%.
- If both COM + COL are used in combination, use COL + 5%.

Options

Premium Metal Finishes

- Specify Metal Finish Color. MFMB: Matte Black, MFS: Silver, MFOS: Oyster, MFNA: Navy, MFOL: Olive, MFGG: Graphite Gray, MFG: Gray, MFDB: Dark Bronze, MFGM Gold, MFGW: Satin Bronze, MFGW: Gray White - \$175

Honey Bizz

120° In-Plan
Wedge

[Click here to view statement of line](#)



1 Model HNY0170NAW31

w" x d" x h"
36 x 31.5 x 32

COM	COL	1	2	3	4	5	6	7	8	9	10	11/L1	12	13/L2
2999	3081	3163	3245	3327	3409	3491	3573	3655	3737	3819	3901	3983	4065	4229

Upholstery Requirements
Fabric yds: 4.5 Leather Sq. Ft.:81
Carton Weight:

Product Features

- Frame constructed of CNC cut engineered hardwood plywood to maximize strength and overall longevity
- Joints are securely fastened with mortise and tenon joinery as well as corner block construction
- Engineered strand webbing is interwoven in the seat of the frame for enhanced endurance, sustainability and comfort
- Soy-based, high resilient polyurethane foam with a minimum of 2.0 density foam in the seat and back
- Steel legs are powder coated for long lasting durability
- Legs have a 1 inch leveling glide for use on any floor surface

2 Leg Finish

[Click to view finishes](#)

Metal Finish
MFW White. Additional Metal Finishes are available, see options

3 Combination Fabrics

DARRAN is pleased to offer customers the design freedom of combination fabrics. When using fabric, vinyl or leather combinations, pricing/yardage requirements will be as follows:

A Lounge Seat 2 yd. (s)
B Lounge Back 2yd.



- When combining two materials of the same grade, pricing will be specified grade + 5%
- If combining two materials of different grades or leather/fabric combination, use the highest grade/price + 5%
- If using COM or COL, pricing will be COM or COL + 5%.
- If both COM + COL are used in combination, use COL + 5%.

Options

Premium Metal Finishes

- Specify Metal Finish Color. MFMB: Matte Black, MFS: Silver, MFOS: Oyster, MFNA: Navy, MFOL: Olive, MFGG: Graphite Gray, MFG: Gray, MFDB: Dark Bronze, MFGM Gold, MFGW: Satin Bronze, MFGW: Gray White - \$175

Honey Bizz

120° In-Plan

Left Side Facing Chair

[Click here to view statement of line](#)



1 Model HNY0170LAC32

w" x d" x h"
35 x 31.5 x 32

COM	COL	1	2	3	4	5	6	7	8	9	10	11/L1	12	13/L2
3087	3178	3269	3360	3451	3542	3633	3724	3815	3906	3997	4088	4179	4270	4452

Upholstery Requirements
Fabric yds: 5 Leather Sq. Ft.:90
Carton Weight:

Product Features

- Frame constructed of CNC cut engineered hardwood plywood to maximize strength and overall longevity
- Joints are securely fastened with mortise and tenon joinery as well as corner block construction
- Engineered strand webbing is interwoven in the seat of the frame for enhanced endurance, sustainability and comfort
- Soy-based, high resilient polyurethane foam with a minimum of 2.0 density foam in the seat and back
- Steel legs are powder coated for long lasting durability
- Legs have a 1 inch leveling glide for use on any floor surface

2 Leg Finish

[Click to view finishes](#)

Metal Finish
MFW White. Additional Metal Finishes are available, see options

3 Combination Fabrics

DARRAN is pleased to offer customers the design freedom of combination fabrics. When using fabric, vinyl or leather combinations, pricing/yardage requirements will be as follows:

A Lounge Seat 2.5 yd. (s)
B Lounge Back 2.5 yd.



- When combining two materials of the same grade, pricing will be specified grade + 5%
- If combining two materials of different grades or leather/fabric combination, use the highest grade/price + 5%
- If using COM or COL, pricing will be COM or COL + 5%.
- If both COM + COL are used in combination, use COL + 5%.

Options

Premium Metal Finishes

- Specify Metal Finish Color. MFMB: Matte Black, MFS: Silver, MFOS: Oyster, MFNA: Navy, MFOL: Olive, MFGG: Graphite Gray, MFG: Gray, MFDB: Dark Bronze, MFGM Gold, MFGW: Satin Bronze, MFGW: Gray White - \$175

Honey Bizz

120° In-Plan
Armless Settee

[Click here to view statement of line](#)



1 Model HNY0170NAL33

w" x d" x h"
48 x 31.5 x 32

COM	COL	1	2	3	4	5	6	7	8	9	10	11/L1	12	13/L2
3290	3418	3546	3674	3802	3930	4058	4186	4314	4442	4570	4698	4826	4954	5210

Upholstery Requirements
Fabric yds: 7 Leather Sq. Ft.:126
Carton Weight:

Product Features

- Frame constructed of CNC cut engineered hardwood plywood to maximize strength and overall longevity
- Joints are securely fastened with mortise and tenon joinery as well as corner block construction
- Engineered strand webbing is interwoven in the seat of the frame for enhanced endurance, sustainability and comfort
- Soy-based, high resilient polyurethane foam with a minimum of 2.0 density foam in the seat and back
- Steel legs are powder coated for long lasting durability
- Legs have a 1 inch leveling glide for use on any floor surface

2 Leg Finish

[Click to view finishes](#)

Metal Finish
MFW White. Additional Metal Finishes are available, see options

3 Combination Fabrics

DARRAN is pleased to offer customers the design freedom of combination fabrics. When using fabric, vinyl or leather combinations, pricing/yardage requirements will be as follows:

A Lounge Seat 4 yd. (s)
B Lounge Back 4 yd.



- When combining two materials of the same grade, pricing will be specified grade + 5%
- If combining two materials of different grades or leather/fabric combination, use the highest grade/price + 5%
- If using COM or COL, pricing will be COM or COL + 5%.
- If both COM + COL are used in combination, use COL + 5%.

Options

Premium Metal Finishes

- Specify Metal Finish Color. MFMB: Matte Black, MFS: Silver, MFOS: Oyster, MFNA: Navy, MFOL: Olive, MFGG: Graphite Gray, MFG: Gray, MFDB: Dark Bronze, MFGM Gold, MFGW: Satin Bronze, MFGW: Gray White - \$175

Honey Bizz

120° In-Plan
Right Side Facing

[Click here to view statement of line](#)



1 Model HNY0170RAC32

w" x d" x h"
35 x 31.5 x 32

COM	COL	1	2	3	4	5	6	7	8	9	10	11/L1	12	13/L2
3087	3178	3269	3360	3451	3542	3633	3724	3815	3906	3997	4088	4179	4270	4452

Upholstery Requirements
Fabric yds: 5 Leather Sq. Ft.:90
Carton Weight:

Product Features

- Frame constructed of CNC cut engineered hardwood plywood to maximize strength and overall longevity
- Joints are securely fastened with mortise and tenon joinery as well as corner block construction
- Engineered strand webbing is interwoven in the seat of the frame for enhanced endurance, sustainability and comfort
- Soy-based, high resilient polyurethane foam with a minimum of 2.0 density foam in the seat and back
- Steel legs are powder coated for long lasting durability
- Legs have a 1 inch leveling glide for use on any floor surface

2 Leg Finish

[Click to view finishes](#)

Metal Finish
MFW White. Additional Metal Finishes are available, see options

3 Combination Fabrics

DARRAN is pleased to offer customers the design freedom of combination fabrics. When using fabric, vinyl or leather combinations, pricing/yardage requirements will be as follows:

A Lounge Seat 2.5 yd. (s)
B Lounge Back 2.5 yd.



- When combining two materials of the same grade, pricing will be specified grade + 5%
- If combining two materials of different grades or leather/fabric combination, use the highest grade/price + 5%
- If using COM or COL, pricing will be COM or COL + 5%.
- If both COM + COL are used in combination, use COL + 5%.

Options

Premium Metal Finishes

- Specify Metal Finish Color. MFMB: Matte Black, MFS: Silver, MFOS: Oyster, MFNA: Navy, MFOL: Olive, MFGG: Graphite Gray, MFG: Gray, MFDB: Dark Bronze, MFGM Gold, MFGW: Satin Bronze, MFGW: Gray White - \$175

Honey Bizz

120° In-Plan
Stand Alone Bench

[Click here to view statement of line](#)



1 Model HNY0170BN200

w" x d" x h"
67.5 x 31.5 x 18

COM	COL	1	2	3	4	5	6	7	8	9	10	11/L1	12	13/L2
2567	2631	2695	2759	2823	2887	2951	3015	3079	3143	3207	3271	3335	3399	3527

Upholstery Requirements
Fabric yds: 4 Leather Sq. Ft.: 72
Carton Weight:

2 Leg Finish

[Click to view finishes](#)

Metal Finish
MFW White. Additional Metal Finishes are available, see options

3 Combination Fabrics

Combination
Fabric Option
Not Available

Product Features

- Frame constructed of CNC cut engineered hardwood plywood to maximize strength and overall longevity
- Joints are securely fastened with mortise and tenon joinery as well as corner block construction
- Engineered strand webbing is interwoven in the seat of the frame for enhanced endurance, sustainability and comfort
- Soy-based, high resilient polyurethane foam with a minimum of 2.0 density foam in the seat.
- Steel legs are powder coated for long lasting durability
- Legs have a 1" leveling glide for use on any floor surface
- Concealed ganging brackets on the underside of each unit.

Options

Premium Metal Finishes

- Specify Metal Finish Color. MFMB: Matte Black, MFS: Silver, MFOS: Oyster, MFNA: Navy, MFOL: Olive, MFGG: Graphite Gray, MFG: Gray, MFDB: Dark Bronze, MFGM Gold, MFSB: Satin Bronze, MFGW: Gray White - \$175

Honey Bizz

120° In-Plan

Left Side End Bench

[Click here to view statement of line](#)



1 Model HNY0170BN201

w" x d" x h"
35 x 31.5 x 18

COM	COL	1	2	3	4	5	6	7	8	9	10	11/L1	12	13/L2
2544	2590	2636	2682	2728	2774	2820	2866	2912	2958	3004	3050	3096	3142	3234

Upholstery Requirements
Fabric yds: 2.5 Leather Sq. Ft.: 45
Carton Weight:

2 Leg Finish

[Click to view finishes](#)

Metal Finish
MFW White. Additional Metal Finishes are available, see options

3 Combination Fabrics

Combination
Fabric Option
Not Available

Product Features

- Frame constructed of CNC cut engineered hardwood plywood to maximize strength and overall longevity
- Joints are securely fastened with mortise and tenon joinery as well as corner block construction
- Engineered strand webbing is interwoven in the seat of the frame for enhanced endurance, sustainability and comfort
- Soy-based, high resilient polyurethane foam with a minimum of 2.0 density foam in the seat.
- Steel legs are powder coated for long lasting durability
- Legs have a 1" leveling glide for use on any floor surface
- Concealed ganging brackets on the underside of each unit.

Options

Premium Metal Finishes

- Specify Metal Finish Color. MFMB: Matte Black, MFS: Silver, MFOS: Oyster, MFNA: Navy, MFOL: Olive, MFGG: Graphite Gray, MFG: Gray, MFDB: Dark Bronze, MFGM Gold, MFSB: Satin Bronze, MFGW: Gray White - \$175

Honey Bizz

120° In-Plan

Right Side End Bench

[Click here to view statement of line](#)



1 Model HNY0170BN202

w" x d" x h"
35 x 31.5 x 18

COM	COL	1	2	3	4	5	6	7	8	9	10	11/L1	12	13/L2
2544	2590	2636	2682	2728	2774	2820	2866	2912	2958	3004	3050	3096	3142	3234

Upholstery Requirements
Fabric yds: 2.5 Leather Sq. Ft.: 45
Carton Weight:

2 Leg Finish

[Click to view finishes](#)

Metal Finish
MFW White. Additional Metal Finishes are available, see options

3 Combination Fabrics

Combination
Fabric Option
Not Available

Product Features

- Frame constructed of CNC cut engineered hardwood plywood to maximize strength and overall longevity
- Joints are securely fastened with mortise and tenon joinery as well as corner block construction
- Engineered strand webbing is interwoven in the seat of the frame for enhanced endurance, sustainability and comfort
- Soy-based, high resilient polyurethane foam with a minimum of 2.0 density foam in the seat.
- Steel legs are powder coated for long lasting durability
- Legs have a 1" leveling glide for use on any floor surface
- Concealed ganging brackets on the underside of each unit.

Options

Premium Metal Finishes

- Specify Metal Finish Color. MFMB: Matte Black, MFS: Silver, MFOS: Oyster, MFNA: Navy, MFOL: Olive, MFGG: Graphite Gray, MFG: Gray, MFDB: Dark Bronze, MFGM Gold, MFSB: Satin Bronze, MFGW: Gray White - \$175

Honey Bizz

120° In-Plan
Wedge

[Click here to view statement of line](#)



1 Model HNY0170BN203

w" x d" x h"
36 x 31.5 x 18

COM	COL	1	2	3	4	5	6	7	8	9	10	11/L1	12	13/L2
2506	2543	2580	2617	2654	2691	2728	2765	2802	2839	2876	2913	2950	2987	3061

Upholstery Requirements
Fabric yds: 2 Leather Sq. Ft.: 36
Carton Weight:

2 Leg Finish

[Click to view finishes](#)

Metal Finish
MFW White. Additional Metal Finishes are available, see options

3 Combination Fabrics

Combination
Fabric Option
Not Available

Product Features

- Frame constructed of CNC cut engineered hardwood plywood to maximize strength and overall longevity
- Joints are securely fastened with mortise and tenon joinery as well as corner block construction
- Engineered strand webbing is interwoven in the seat of the frame for enhanced endurance, sustainability and comfort
- Soy-based, high resilient polyurethane foam with a minimum of 2.0 density foam in the seat.
- Steel legs are powder coated for long lasting durability
- Legs have a 1" leveling glide for use on any floor surface
- Concealed ganging brackets on the underside of each unit.

Options

Premium Metal Finishes

- Specify Metal Finish Color. MFMB: Matte Black, MFS: Silver, MFOS: Oyster, MFNA: Navy, MFOL: Olive, MFGG: Graphite Gray, MFG: Gray, MFDB: Dark Bronze, MFGM Gold, MFSB: Satin Bronze, MFGW: Gray White - \$175

Honey Bizz

90° In-Plan
Stand Alone Small Bench

[Click here to view statement of line](#)



1 Model HNY0170BN204

w" x d" x h"
47.5 x 31.5 x 18

COM	COL	1	2	3	4	5	6	7	8	9	10	11/L1	12	13/L2
2512	2585	2658	2731	2804	2877	2950	3023	3096	3169	3242	3315	3388	3461	3607

Upholstery Requirements
Fabric yds: 3.5 Leather Sq. Ft.: 63
Carton Weight:

2 Leg Finish

[Click to view finishes](#)

Metal Finish
MFW White. Additional Metal Finishes are available, see options

3 Combination Fabrics

Combination
Fabric Option
Not Available

Product Features

- Frame constructed of CNC cut engineered hardwood plywood to maximize strength and overall longevity
- Joints are securely fastened with mortise and tenon joinery as well as corner block construction
- Engineered strand webbing is interwoven in the seat of the frame for enhanced endurance, sustainability and comfort
- Soy-based, high resilient polyurethane foam with a minimum of 2.0 density foam in the seat.
- Steel legs are powder coated for long lasting durability
- Legs have a 1" leveling glide for use on any floor surface
- Concealed ganging brackets on the underside of each unit.

Options

Premium Metal Finishes

- Specify Metal Finish Color. MFMB: Matte Black, MFS: Silver, MFOS: Oyster, MFNA: Navy, MFOL: Olive, MFGG: Graphite Gray, MFG: Gray, MFDB: Dark Bronze, MFGM Gold, MFSB: Satin Bronze, MFGW: Gray White - \$175

Honey Bizz

90° In-Plan
Stand Alone Large Bench

[Click here to view statement of line](#)



1 Model HNY0170BN205

w" x d" x h"
65.5 x 31.5 x 18

COM	COL	1	2	3	4	5	6	7	8	9	10	11/L1	12	13/L2
2792	2883	2974	3065	3156	3247	3338	3429	3520	3611	3702	3793	3884	3975	4157

Upholstery Requirements
Fabric yds: 5 Leather Sq. Ft.: 90
Carton Weight:

2 Leg Finish

[Click to view finishes](#)

Metal Finish
MFW White. Additional Metal Finishes are available, see options

3 Combination Fabrics

Combination
Fabric Option
Not Available

Product Features

- Frame constructed of CNC cut engineered hardwood plywood to maximize strength and overall longevity
- Joints are securely fastened with mortise and tenon joinery as well as corner block construction
- Engineered strand webbing is interwoven in the seat of the frame for enhanced endurance, sustainability and comfort
- Soy-based, high resilient polyurethane foam with a minimum of 2.0 density foam in the seat.
- Steel legs are powder coated for long lasting durability
- Legs have a 1" leveling glide for use on any floor surface
- Concealed ganging brackets on the underside of each unit.

Options

Premium Metal Finishes

- Specify Metal Finish Color. MFMB: Matte Black, MFS: Silver, MFOS: Oyster, MFNA: Navy, MFOL: Olive, MFGG: Graphite Gray, MFG: Gray, MFDB: Dark Bronze, MFGM Gold, MFSB: Satin Bronze, MFGW: Gray White - \$175

Honey Bizz

90° In-Plan

Left Side End Bench

[Click here to view statement of line](#)



1 Model HNY0170BN206

w" x d" x h"
32 x 31.5 x 18

COM	COL	1	2	3	4	5	6	7	8	9	10	11/L1	12	13/L2
2536	2591	2646	2701	2756	2811	2866	2921	2976	3031	3086	3141	3196	3251	3361

Upholstery Requirements
Fabric yds: 3 Leather Sq. Ft.: 54
Carton Weight:

2 Leg Finish

[Click to view finishes](#)

Metal Finish
MFW White. Additional Metal Finishes are available, see options

3 Combination Fabrics

Combination
Fabric Option
Not Available

Product Features

- Frame constructed of CNC cut engineered hardwood plywood to maximize strength and overall longevity
- Joints are securely fastened with mortise and tenon joinery as well as corner block construction
- Engineered strand webbing is interwoven in the seat of the frame for enhanced endurance, sustainability and comfort
- Soy-based, high resilient polyurethane foam with a minimum of 2.0 density foam in the seat.
- Steel legs are powder coated for long lasting durability
- Legs have a 1" leveling glide for use on any floor surface
- Concealed ganging brackets on the underside of each unit.

Options

Premium Metal Finishes

- Specify Metal Finish Color. MFMB: Matte Black, MFS: Silver, MFOS: Oyster, MFNA: Navy, MFOL: Olive, MFGG: Graphite Gray, MFG: Gray, MFDB: Dark Bronze, MFGM Gold, MFSB: Satin Bronze, MFGW: Gray White - \$175

Honey Bizz

90° In-Plan

Right Side End Bench

[Click here to view statement of line](#)



1 Model HNY0170BN207

w" x d" x h"
32 x 31.5 x 18

COM	COL	1	2	3	4	5	6	7	8	9	10	11/L1	12	13/L2
2536	2591	2646	2701	2756	2811	2866	2921	2976	3031	3086	3141	3196	3251	3361

Upholstery Requirements
Fabric yds: 3 Leather Sq. Ft.: 54
Carton Weight:

2 Leg Finish

[Click to view finishes](#)

Metal Finish
MFW White. Additional Metal Finishes are available, see options

3 Combination Fabrics

Combination
Fabric Option
Not Available

Product Features

- Frame constructed of CNC cut engineered hardwood plywood to maximize strength and overall longevity
- Joints are securely fastened with mortise and tenon joinery as well as corner block construction
- Engineered strand webbing is interwoven in the seat of the frame for enhanced endurance, sustainability and comfort
- Soy-based, high resilient polyurethane foam with a minimum of 2.0 density foam in the seat.
- Steel legs are powder coated for long lasting durability
- Legs have a 1" leveling glide for use on any floor surface
- Concealed ganging brackets on the underside of each unit.

Options

Premium Metal Finishes

- Specify Metal Finish Color. MFMB: Matte Black, MFS: Silver, MFOS: Oyster, MFNA: Navy, MFOL: Olive, MFGG: Graphite Gray, MFG: Gray, MFDB: Dark Bronze, MFGM Gold, MFSB: Satin Bronze, MFGW: Gray White - \$175

Honey Bizz

90° In-Plan
Corner Bench Connector

[Click here to view statement of line](#)



1 Model HNY0170BN208

w" x d" x h"
31.5 x 31.5 x 18

COM	COL	1	2	3	4	5	6	7	8	9	10	11/L1	12	13/L2
2508	2563	2618	2673	2728	2783	2838	2893	2948	3003	3058	3113	3168	3223	3333

Upholstery Requirements
Fabric yds: 3 Leather Sq. Ft.: 54
Carton Weight:

2 Leg Finish

[Click to view finishes](#)

Metal Finish
MFW White. Additional Metal Finishes are available, see options

3 Combination Fabrics

Combination
Fabric Option
Not Available

Product Features

- Frame constructed of CNC cut engineered hardwood plywood to maximize strength and overall longevity
- Joints are securely fastened with mortise and tenon joinery as well as corner block construction
- Engineered strand webbing is interwoven in the seat of the frame for enhanced endurance, sustainability and comfort
- Soy-based, high resilient polyurethane foam with a minimum of 2.0 density foam in the seat.
- Steel legs are powder coated for long lasting durability
- Legs have a 1" leveling glide for use on any floor surface
- Concealed ganging brackets on the underside of each unit.

Options

Premium Metal Finishes

- Specify Metal Finish Color. MFMB: Matte Black, MFS: Silver, MFOS: Oyster, MFNA: Navy, MFOL: Olive, MFGG: Graphite Gray, MFG: Gray, MFDB: Dark Bronze, MFGM Gold, MFSB: Satin Bronze, MFGW: Gray White - \$175

Honey Bizz

Bench
Medium Modular

[Click here to view statement of line](#)



1 Model HNY0170BN209

w" x d" x h"
48 x 31.5 x 18

COM	COL	1	2	3	4	5	6	7	8	9	10	11/L1	12	13/L2
2514	2587	2660	2733	2806	2879	2952	3025	3098	3171	3244	3317	3390	3463	3609

Upholstery Requirements
Fabric yds: 4 Leather Sq. Ft.: 72
Carton Weight:

2 Leg Finish

[Click to view finishes](#)

Metal Finish
MFW White. Additional Metal Finishes are available, see options

3 Combination Fabrics

Combination
Fabric Option
Not Available

Product Features

- Frame constructed of CNC cut engineered hardwood plywood to maximize strength and overall longevity
- Joints are securely fastened with mortise and tenon joinery as well as corner block construction
- Engineered strand webbing is interwoven in the seat of the frame for enhanced endurance, sustainability and comfort
- Soy-based, high resilient polyurethane foam with a minimum of 2.0 density foam in the seat.
- Steel legs are powder coated for long lasting durability
- Legs have a 1" leveling glide for use on any floor surface
- Concealed ganging brackets on the underside of each unit.

Options

Premium Metal Finishes

- Specify Metal Finish Color. MFMB: Matte Black, MFS: Silver, MFOS: Oyster, MFNA: Navy, MFOL: Olive, MFGG: Graphite Gray, MFG: Gray, MFDB: Dark Bronze, MFGM Gold, MFSB: Satin Bronze, MFGW: Gray White - \$175

Honey Bizz

Bench
Small Modular Bench

[Click here to view statement of line](#)



1 Model HNY0170BN210

w" x d" x h"
25 x 31.5 x 32

COM	COL	1	2	3	4	5	6	7	8	9	10	11/L1	12	13/L2
2495	2532	2569	2606	2643	2680	2717	2754	2791	2828	2865	2902	2939	2976	3050

Upholstery Requirements
Fabric yds: 2 Leather Sq. Ft.: 36
Carton Weight:

2 Leg Finish

[Click to view finishes](#)

Metal Finish
MFW White. Additional Metal Finishes are available, see options

3 Combination Fabrics

Combination
Fabric Option
Not Available

Product Features

- Frame constructed of CNC cut engineered hardwood plywood to maximize strength and overall longevity
- Joints are securely fastened with mortise and tenon joinery as well as corner block construction
- Engineered strand webbing is interwoven in the seat of the frame for enhanced endurance, sustainability and comfort
- Soy-based, high resilient polyurethane foam with a minimum of 2.0 density foam in the seat.
- Steel legs are powder coated for long lasting durability
- Legs have a 1" leveling glide for use on any floor surface
- Concealed ganging brackets on the underside of each unit.

Options

Premium Metal Finishes

- Specify Metal Finish Color. MFMB: Matte Black, MFS: Silver, MFOS: Oyster, MFNA: Navy, MFOL: Olive, MFGG: Graphite Gray, MFG: Gray, MFDB: Dark Bronze, MFGM Gold, MFSB: Satin Bronze, MFGW: Gray White - \$175

Honey Bizz

Bench
Large Modular Bench

[Click here to view statement of line](#)



1 Model HNY0170BN211

w" x d" x h"
64 x 31.5 x 18

COM	COL	1	2	3	4	5	6	7	8	9	10	11/L1	12	13/L2
2792	2865	2938	3011	3084	3157	3230	3303	3376	3449	3522	3595	3668	3741	3887

Upholstery Requirements
Fabric yds: 4 Leather Sq. Ft.: 72
Carton Weight:

2 Leg Finish

[Click to view finishes](#)

Metal Finish
MFW White. Additional Metal Finishes are available, see options

3 Combination Fabrics

Combination
Fabric Option
Not Available

Product Features

- Frame constructed of CNC cut engineered hardwood plywood to maximize strength and overall longevity
- Joints are securely fastened with mortise and tenon joinery as well as corner block construction
- Engineered strand webbing is interwoven in the seat of the frame for enhanced endurance, sustainability and comfort
- Soy-based, high resilient polyurethane foam with a minimum of 2.0 density foam in the seat.
- Steel legs are powder coated for long lasting durability
- Legs have a 1" leveling glide for use on any floor surface
- Concealed ganging brackets on the underside of each unit.

Options

Premium Metal Finishes

- Specify Metal Finish Color. MFMB: Matte Black, MFS: Silver, MFOS: Oyster, MFNA: Navy, MFOL: Olive, MFGG: Graphite Gray, MFG: Gray, MFDB: Dark Bronze, MFGM Gold, MFSB: Satin Bronze, MFGW: Gray White - \$175

DARRAN®

Plateau with 2 plugs and 1 – USB-A+C

Style Number

List Price



PD-PLAT

\$762

Specifications

Power & Data Options

